

ONE STEP BATTERY MANAGEMENT.



CELLTRAQ SYSTEM

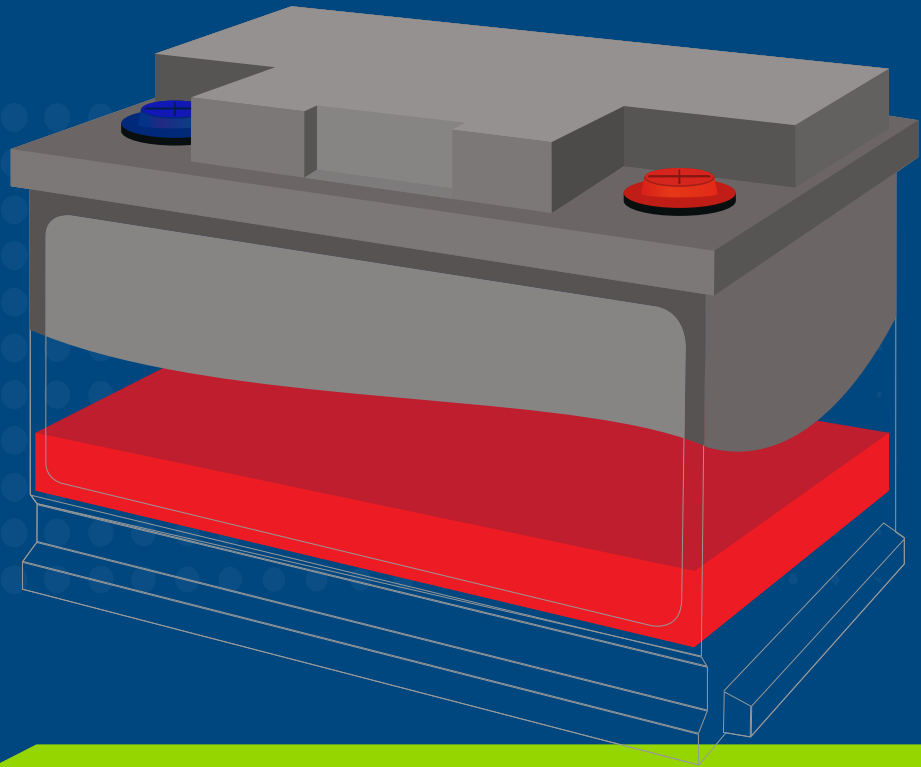
ENTERPRISE BATTERY ASSET MANAGEMENT

As power reliability becomes more critical in telecommunications, data management, utility and other industries, management of batteries grows in complexity and importance. Uptime is a requirement, zero downtime is critical. Midtronics **CELLTRAQ™ SYSTEM** was developed to address the growing importance of 24/7/365 operation and simplify the process of battery maintenance and management.

CELLTRAQ SYSTEM collects battery measurements generated by Midtronics **CELLGUARD™** wireless battery monitoring system or **CELLTRON®** battery analyzers to a central location allowing for:

- Simplification of the testing/monitoring data collection process
- Effective analysis of battery assets by facility personnel
- Efficient process management, including budget management of scheduled battery replacement

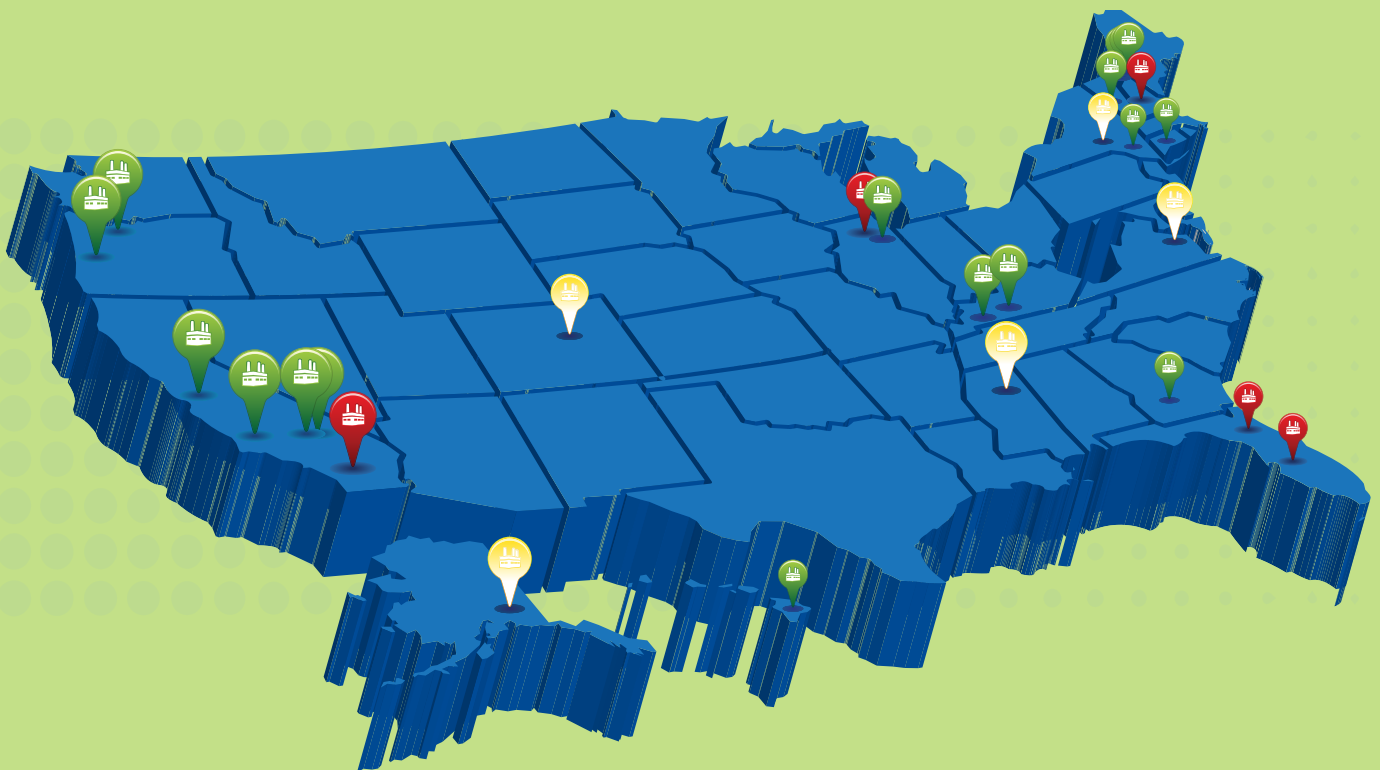
VISIBILITY IS KEY. SEE WHAT'S INSIDE.



AN X-RAY FOR YOUR BATTERY

Visibility to key system parameters is needed to ensure reliability. Among those key parameters is backup battery state of health. An often forgotten element, the backup battery is a critical component of the standby power system. Without the proper view of its characteristics, the battery can fail without warning.

CELLTRAQ SYSTEM ENSURES THAT STATUS INFORMATION ABOUT THE STATE OF HEALTH OF EVERY BATTERY IS AVAILABLE ON DEMAND FOR KEY DECISION MAKERS.



ADDITIONAL PLATFORMS

CELLTRAQ.NET

Hosted on a secure server by Midtronics providing effective processing and reporting of battery management data.

THIS CLOUD-BASED WEB APPLICATION PROVIDES:

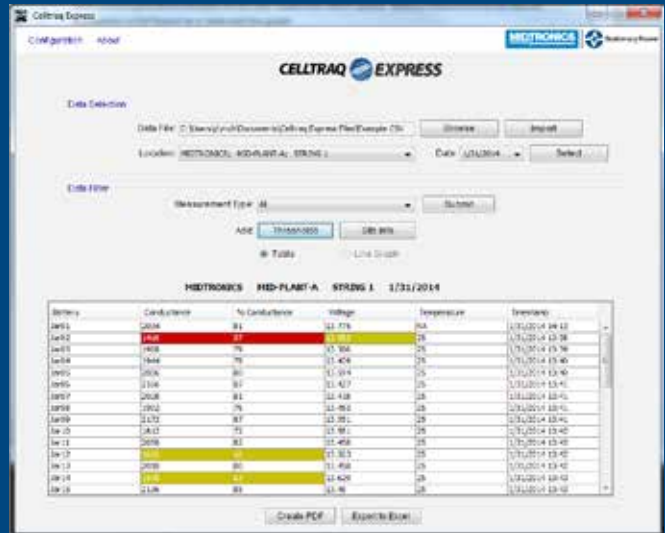
- Professional battery maintenance reports
- Historical battery maintenance data
- Alert notifications via email and text messages

WHY?

- Simplification of battery measurements collection process
- All battery data is stored at a centralized location
- Ability to secure critical battery data without the risk of loss

CELLTRAQ EXPRESS

The primary function of the **CELLTRAQ EXPRESS** PC Application is to read the .csv file generated by **CELLTRAQ ADVANTAGE** battery analyzers and display the results on screen, which can also be exported to Excel or exported as a PDF report.



PHONE/TABLET APPLICATIONS

CELLTRAQ is available as iOS and Android phone and tablet applications. The same read/alert functionality contained in **CELLTRAQ SYSTEM** are the primary features of the **CELLTRAQ** phone and tablet applications. **CELLTRAQ** apps provide users with viewing capabilities of their measurement data, on-the-go from any global location along with alert notifications for alarms, warnings, and discharges.



CELLTRAQ SYSTEM ENTERPRISE BATTERY ASSET MANAGEMENT

CELLTRAQ SYSTEM simplifies the process of battery data storage and management, enabling analysis and reporting of battery information from a centralized location.

CELLTRAQ SYSTEM is a full enterprise database system designed to manage battery system data generated by maintenance routines using Midtronics **CELLTRON**® battery testers or **CELLGUARD**™ wireless battery monitoring equipment.

CELLTRAQ KEY FEATURES

- Server based architecture
- Provides centralized data storage, data access and management from any web access point
- Streamlines review of information and safeguards historical data
- Instant indication of battery asset conditions throughout enterprise from one on-screen indicator
- Ensures efficient review of system state of health
- Simple, familiar user-friendly set-up, navigation and reporting
- System-derived notification of battery faults via e-mail and text message as they occur
- Includes suggested corrective action for technician
- Automated reports delivered via email



CELLTRAQ KEY FEATURES

- Multiple contact notification
- Corrective action and audit trail record keeping
- Graphical presentation of battery system trends for rapid identification of potential future faults
- Centralized repository of battery information, including installation date, cost and performance specifications
- Displays and produces formatted reports for key battery performance parameters/measurements
- Measurements are captured, recorded and time-stamped at each occurrence for effective battery life history reporting and analysis
- SNMP Trap Notification (in addition to Email and Text Message)
- Automated PDF System Reports

REPORT GRAPHICS



FIGURE 1:
AN ORGANIZED APPROACH TO
MANAGING DATA/USER INTERFACE



FIGURE 2:
AN EXAMPLE OF GRAPHICAL DATA OUTPUT

String	Age	Capacity	Resistance	Health Index	Status
1	10000	10000	10000	10000	Normal
2	10000	10000	10000	10000	Normal
3	10000	10000	10000	10000	Normal
4	10000	10000	10000	10000	Normal
5	10000	10000	10000	10000	Normal
6	10000	10000	10000	10000	Normal
7	10000	10000	10000	10000	Normal
8	10000	10000	10000	10000	Normal
9	10000	10000	10000	10000	Normal
10	10000	10000	10000	10000	Normal

FIGURE 3:
PRINTED REPORT OUTPUT



CELLTRAQ SYSTEM REQUIREMENTS

Application

- Windows Operating System
XP/7.0/8.0
Windows Server 2003/2008
- Tomcat Web Server
- SQL Server
2005/2008/2012
- Database (or SQL Server)
2005/2008 Express free version

Minimum

4G RAM
2.6G Processor
Tomcat: 2G RAM
Database: 2G RAM

Recommended

6G RAM
2.6G or higher Processor
Tomcat: 2G RAM or above
Database: 4G RAM or above

** Tomcat and the Database can either run on the same server or on separate servers*



MIDTRONICS



Stationary Power



WWW.MIDTRONICS.COM | WWW.STATIONARY-POWER.COM

Corporate Headquarters

Willowbrook, IL USA
Phone: 1.630.323.2800

Canadian Inquiries
Toll Free: 1.866.592.8053

Midtronics b.v.

European Headquarters
Houten, The Netherlands
Serving Europe, Africa, the Middle East,
and The Netherlands
Phone: +31 306 868 150

Midtronics China

China Operations
Shenzhen, China
Phone: +86 755 8202 2037

Latin America

Asia/Pacific (excluding China)
Contact Corporate Headquarters
Phone: +1.630.323.2800

Email: sppcustomerservice@midtronics.com

190-048B ©2014 Midtronics. INC